

JERUSALEM



CANVAS BY PIPPIN STUDIO

STITCH GUIDE BY JANET M PERRY

MATERIALS

- 1 skein each Caron Collection Watercolours
 - 312 Linen (white)
 - 127 Crystal Bay (pale blue)
- 1 skein each Vineyard Silk
 - C-109 Bright White (white)
 - C-067 Foliage (green)
- 1 skein Threadworx overdye floss 10801 (red)
- 1 Baroque Silk *1116 Chianti (dark red)
- 1 skein Gloriana Lorikeet 000W1 Soft White (white)
- 1 skein each Oriental Linen
 - OL 000 Ecru (cream)
 - OL 057 Greystone (pale beige)
- 1 skein Straw Silk 1100 Polar Bear (white)

1 card Rainbow Persian RP60 {dark green}
 1 card each Petite Very Velvet
 V656 (grey)
 V631 (red)
 1 card each Grandeur
 G855 (light grey)
 G862 (light blue)
 1 skein Watercolours 127 Crystal Bay (pale blue)
 1 skein Planet Earth Silk 004 Red Hot (red)
 1 card Soft Sheen Fyre Werks FT10 (white)
 1 card Silk Lamé SL89 (blue)
 1 skein Threadworx Expressions 217 (red)
 threads from your stash: gold metallic and brown floss or pearl cotton

BUILDINGS

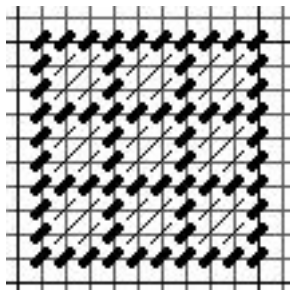
Stitch the grey lines around the buildings, but not around the bottom of the buildings, in **Tent** using light grey (G855) Grandeur.

Stitch the buildings from back to front. Stitch the tall building at the far right in **Wacky Uneven Corduroy**, below, using white (1100) Straw Silk.



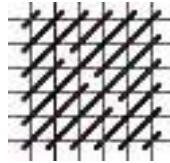
Stitch the roof in **Tent** using red (V631) Very Velvet.

Stitch the building on the right with the burgundy roof in **Framed Mosaic**, below, using white (12) Watercolours.

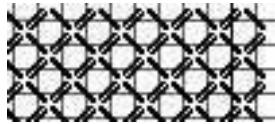


Stitch the roof in **Tent** using red (V631) Very Velvet.

Stitch the shorter building between these two in **Genny's Scotch**, below, using white (OL000) Oriental Linen.



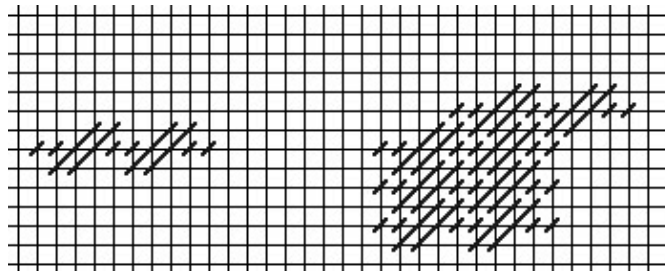
Stitch this building's roof in **Four-way Continental**, below, using red (217) Expressions.



Stitch the building in the center with the wing in **Horizontal Diagonal Cashmere**, below, using white (C-109) Vineyard Silk.



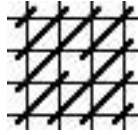
Stitch the tall building with the red dome in **Double Nobuko**, below, using pale beige (OL057) Oriental Linen.



The dome is stitched in **Padded Gobelin** with two layers of padding. Use round threads for the padding. The bottom layer is vertical stitches two threads smaller all around than the painting on the canvas. The second layer of padding is horizontal stitches covering the previous layer and one thread smaller than the painting.

The top layer is vertical stitches made using red (004) silk. These should cover the entire painted area. By using padding, the dimensional effect created by the painted canvas is preserved.

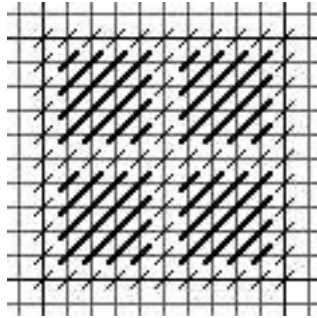
Stitch the short building on the far left in **Divided Scotch**, below, using one strand of white (12) Watercolours.



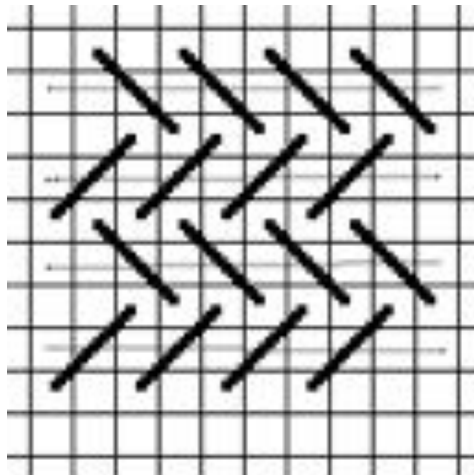
Stitch the flat-roofed building in front of the red-domed building in **Wide Diaper** 2 below, using white (1100) Straw Silk.



Stitch the blue-domed building in **Framed Scotch**, below, using three strands of white (000W1) Lorikeet.



Stitch the blue roof in **Laid Single Woven** below, using light blue (G862) Grandeur. Stitch the pole on the dome in **Tent** using pale beige (OL057) Oriental Linen.



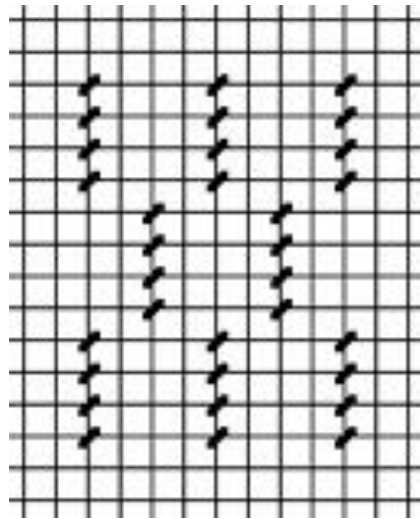
Stitch the building partially on the border (bottom right) in **Diagonal Gobelin**, next page, using one strand of white (12) Watercolours.



Stitch all the windows and doors in **Tent** using grey (V656) Petite Very Velvet. Stitch the gold poles on top of the buildings in **Tent** using gold thread from your stash.

SKY

Stitch the sky in **Vertical Quadrille**, below, using blue (SL89) Silk Lamé.



Stitch the stars in **Tent** using white (FT10) Soft Sheen Fyre Werks.

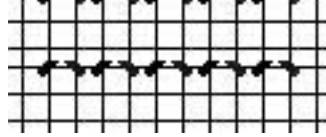
TREES

Stitch the cypress trees (tall, skinny dark green) in **Tent** using dark green (RP60) Persian. Stitch the green tree next to the cypresses on the left in **Tent** using green (C-067) silk.

Stitch the palm tree's trunk in **Tent** using brown thread from your stash. Stitch the palm tree's leaves and the two green shrubs in **Straight Stitches** using green (C-067) silk. These sides can have different slants and should cover the painted area. It's OK if the stitches share holes.

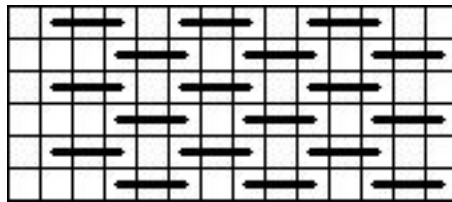
BORDERS

Stitch the white single-line border in **Single-line Four-way Continental**, below, using one strand of white (12) Watercolours.



Stitch the grey single-line border **Single-line Four-way Continental**, above, using **. Stitch the light grey single-line border along the bottom and partially up the sides **Single-line Four-way Continental**, above, using light grey (G855) Grandeur and grey (V656) Very Velvet. For both these borders follow the stitch direction of the white border, below.

Stitch the light blue border in **2-2 Darn**, below, using 1 strand of pale blue (127) Watercolours. It's important that this border wrap around the center. To do this, stitch the bottom first to establish the pattern. Then stitch both sides up to where they meet the top border. Then stitch the bottom line of the top border, making adjustments to the spacing if needed to make it fit.



Stitch the red parts of the outside border **Reverse Diagonal Gobelin**, below, using six strands of red (10891) Threadworx floss.



Stitch the dark red parts of the outside border in **Diagonal Gobelin**, below, using a full strand of dark red (1116) Baroque Silk.

